



Client _____ Quantity _____
Project _____ Position _____

Vision C60 cabinet

Model: AC60/2T

Cod: A62600700201

Technical data

Max capacity:	33 trays EN60x40 h 20 mm
Gross capacity:	947 lt
Temperature range:	-30°+15°C
Ventilation range:	50% - 100%
Humidity range:	90% - 40% (T°C >+4°C)
Refrigerant unit:	Plug-in
Energetic class:	D
Energy efficiency index:	57,6
Annual consumption:	2806 kW/h annum
24h consumption:	7,687 kW/h/24h
Climate class:	5
Cooling gas:	R290
Defrost:	Hot gas
Valve:	Supplied standard with solenoid
Dimensions (mm):	810×1096×2215 mm
Packing dimensions:	905×1130×2258 mm
Gross weight:	230 Kg
Voltage:	220-240 V - 50 Hz
Total rate:	1410 W
Absorbed Current:	6,5 A
Cooling capacity:	965 W*
*:	Evap. -30°C Cond. +55°C

Features

Functions:	Storage, chocolate, thawing, ice cream
Standard equipment:	20 coppie guida per teglie EN60x80 Illuminazione LED
Control:	7" touch screen display with USB port
Doors:	2 doors, self-closing with a 105° stop, right hinged
Door gasket:	Magnetic, triple chamber and easily replaceable
Insulation:	75 mm thickness - CFC/HCFC free
Exterior/interior finishing:	Exterior and interior AISI 304 stainless steel. Back, base and internal technical compartment in galvanized/colaminated steel.
Inner corners:	Rounded for easy cleaning and ensuring maximum hygiene
Handle:	In AISI 304 stainless steel
Racks and slides:	Stainless steel AISI 304
Feets:	AISI 304 stainless steel adjustable h 100/150 mm
Cosmo:	Wi-Fi remote control system

Accessories and variants

RAL customisable colouring

Plug-in water unit

Power supply frequency 60Hz

Other special voltage

4 Swivel and brake castors h 128 mm

Aluminium coated backing-pan EN60x40 h 20 mm

Stainless steel shelf EN60x40

Plastic coated shelf EN60x40

Pair of type L slides 755 mm EN60x80

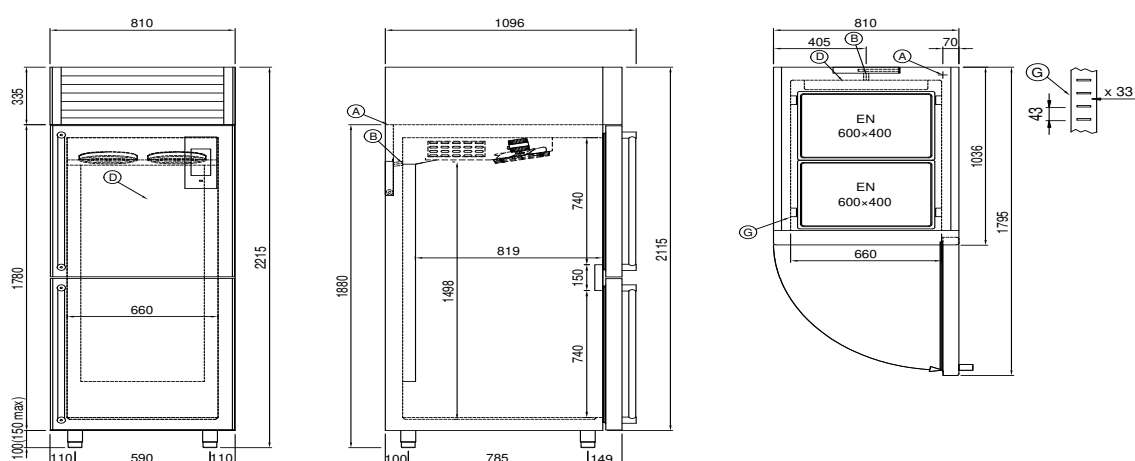
Serial interface, RS485 cable

COSMO - wi-fi control

Cosmo is the wi-fi technology that allows VISION storage units to be connected, updated and monitored from smartphones. VISION is also a Cosmo hub and allows remote supervision of the Coldline appliances connected to it. From the CosmoApp you can check the operating conditions of each machine and receive alerts in the event of abnormal operation.

*The installation requires a kit for the replacement of the racks

Technical draw



A: Power supply cable outlet

D: Airflow conveyor

G: Racks pitch

In order to constantly offer the best possible products we reserve the right to make changes on technical specifications without incurring any obligation for equipment previously or subsequently sold.